



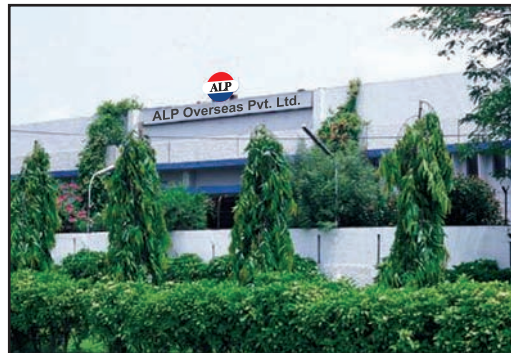
Building Profile



ALP Overseas Private Limited



Our Plants



ALP Seals – Your Protection Against Weather Elements !!

ALP Group was established in 1984 and pioneered the EPDM Rubber Technology in India with the objective of providing the best sealing technology solutions to Indian and Overseas customers for the Building and Construction Industry. Our Ultramodern Plant and Production facilities consist of :

1. Intermix Mills for mixing compounds according to customers' specifications
2. Ultra High Frequency Extrusion Lines
3. Moulding Machines
4. R & D Lab equipped with state-of-the-art testing and laboratory equipments like Tensile Testers, Money Viscometer, Hampden Ozone Chamber, Micro Hardness Testers, Swing Die Rheometers et cetera.
5. Design Department equipped with Catia V-3D Computers.

Today, the Group is the largest manufacturer of EPDM, Silicone, TPR, TPE-V and PVC Seals and Gaskets in India. ALP is there with you around every edge and corner !! We are the company you turn to for custom made solutions to all your problems – from Co-Extruded Profiles in Dual Hardness to Silicone Sealant Compatible EPDM Rubber Extrusions, which exhibit excellent adhesion to Dow Corning, Tremco & GE Momentive Silicone Sealants, from Taped EPDM Rubber Extrusions for Structural Glazing to Fire Retardant Gaskets – we have an answer to all your problems. Our extensive experience enables us to deliver cutting edge solutions for all your needs – sealing solutions from ceiling to the cellar we have a seal for every edge & every corner.

ALP has lived upto its reputation of a Leading Sealing Systems provider by bringing Coloured EPDM Technology to India. We offer a wide range of Door and Window Sealing Systems, Curtain Walling Gaskets (both for Stick Systems and Unitized Systems), Seals for Patio and Swing Entrance Door Systems, Facade Systems, Conservatories and Green Houses, Skylights and Sliding Door and Window systems.



Project : Gold Crest
Gaskets by : ALP Overseas
Client : ETA Star Properties
Consultant : W.S. Atkins
Contractor : Al Miraikhi Cont. Co.
Floor : 3G+2P+39 storey



ALP Seals – Sealing Solutions from Cellar to Ceiling



PRODUCT RANGE

- EPDM Solid/Dense Rubber Profiles.
- EPDM Sponge Rubber Profiles.
- EPDM Co-Extruded Gaskets in Dual Durometer Hardness.
- Coloured EPDM Rubber Extrusions.
- Silicone Rubber Extrusions.
- Coloured Silicone Rubber Extrusions.
- EPDM Rubber Extrusions with Tape.
- Silicone Sealant Compatible EPDM Rubber Gaskets.
- Moulded Corners.
- Moulded Window Frames.
- Flocked Glass Run and Polyurethane Coated Rubber Profiles for Sliding Door & Window Systems.
- EPDM Rubber Mouldings like Drainage Caps.
- EPDM Rubber Profiles for Stick and Unitized Systems.

VALUE ADDED SERVICES AVAILABLE:

- Specialized Design Centre with Catia V Computers.
- Design Engineers available on call.
- Gasket/Seal Consultant available on call for professional advice on Making "Weather Proof" and "Monsoon Proof" Designs.
- Expert advise on selection of Polymer.
- Expert advise on Compatibility of various Polymers with Various Substrates.

Project : Iris Blue Tower
Gaskets by : ALP Overseas
Client : Sheth Estate International
Consultant : NEB
Contractor : Al Ahmadi Cont. Co.
Floor : 3B+G+38+Mech

EPDM Profiles

EPDM stands for Ethylene Polypropylene Diene Monomer and it is a synthetic hydrocarbon based organic rubber which exhibits outstanding resistance to ultra violet radiation in sunlight and ozone & heat resistance. It has an exceptionally high ability to accept loading and reagents, fillers and plasticizers. EPDM is basically a thermoset rubber, which contains Ethylene and Polypropylene along with a third Monomer.

EPDM is widely accepted as the perfect material for rubber profiles used in Structural Glazing by Aluminum Fabricators and Door Window Manufacturers. The typical properties of EPDM Rubber are as follows :

ASTM SPECIFIED POLYMER PROPERTIES	EPDM
Density Mg/m ³	0.86
Colourability	Good
ASTM SPECIFIED PHYSICAL ENVIRONMENTAL RESISTANCE	EPDM
Hardness, Durometer	30~95 Shore A
Tensile Strength Reinforced (Mpa)	<18
Tear Strength	Fair
100% Modulus (Mpa)	0.69~700
Elongation %	100~700
Compression Set % (Method B)	20~60
Resilience, Rebound (low temp)	Good
Resilience, Rebound (high temp)	Very Good
Flame	Poor
Ozone	Outstanding
Hysteresis	Good
Flex Cracking	Very Good
Tear	Fair-Good
Abrasion	Good-Excellent
Impact	Very Good
Heat Aging	Outstanding
Oxidation	Outstanding
Water	Excellent



Project : 3B-G+34 Comm./Resd.
Tower on Plot No. C3
Gaskets by : ALP Overseas
Client : ETA Star Properties
Consultant : DAR
Contractor : Ascon



ALP Seals – With you Around Every Corner



ASTM SPECIFIED POLYMER PROPERTIES	EPDM
Radiation	Good
Resistance to Alkalies	Good-Excellent
Resistance to Acids(Dilute)	Excellent
Resistance to Acids (Concentrated)	Fair-Good
Oils & Gasoline	Poor
ELECTRICAL PROPERTIES	EPDM
Vol Res, Ohm-cm	2×10^{16}
THERMAL PROPERTIES	EPDM
Operating Temperature	-35 ⁰ C to +120 ⁰ C

The typical properties of an EPDM Rubber gasket are as follows:

S. No.	Characteristics Tested	Standard Followed	ASTM/ Customer's Specifications	Observed Values
1	Hardness Shore A	ASTM-D2240	70±5	73
2	Tensile Strength (Kg/cm ²)	ASTM-D412	70Min	84
3	Elongation at Break (%)	ASTM-D412	250Min.	273
4	Tear Strength (Kg/cm)	ASTM-D624	15Min.	24
5	100% Modulus (Kg/cm ²)	ASTM-D412	20 Min.	25
6	Specific Gravity	ISO-2781	1.25±0.05	1.25
7	Age Resistance At 70°C For 70 Hrs	ASTM-D573		
I	ΔHardness	ASTM-D2240	+10,-5	+5
II	ΔTensile Strength (%)	ASTM-D412	-25 Max.	+10
III	ΔElongation At Break (%)	ASTM-D412	-35 Max.	-21
8	Compression Set (%) At 70°C For 22 Hrs	ASTM-D395	50 Max.	34
9	Ozone Resistance	ASTM-D1149	NO	NO
I	O ₃ Concentration 50pphm		VISIBLE	VISIBLE
II	Test Temperature 40°C		CRACKS	CRACKS
III	Elongation (%)20			
IV	Duration 72 Hrs			

Project : Madina Tower
 Gaskets by : ALP Overseas
 Client : Reef Real Estate
 Consultant : KEO International
 Contractor : Emirates Belbadi Cont. Co.
 Floor : 2+1+29 storey

ALP Seals – Cutting Edge Technology – If you have a Corner – We have a seal for It

ALP's expertise lies in, application analysis by our 'Marketing Experts' and Design Engineers. ALP actively solicits and invites its customers to visit our plant and facilities and meet our design engineers or we will travel to meet you to discuss your application requirements. Our Marketing Experts and Design Engineers are available for consultation on any job

Compound assessment and Recommendation :

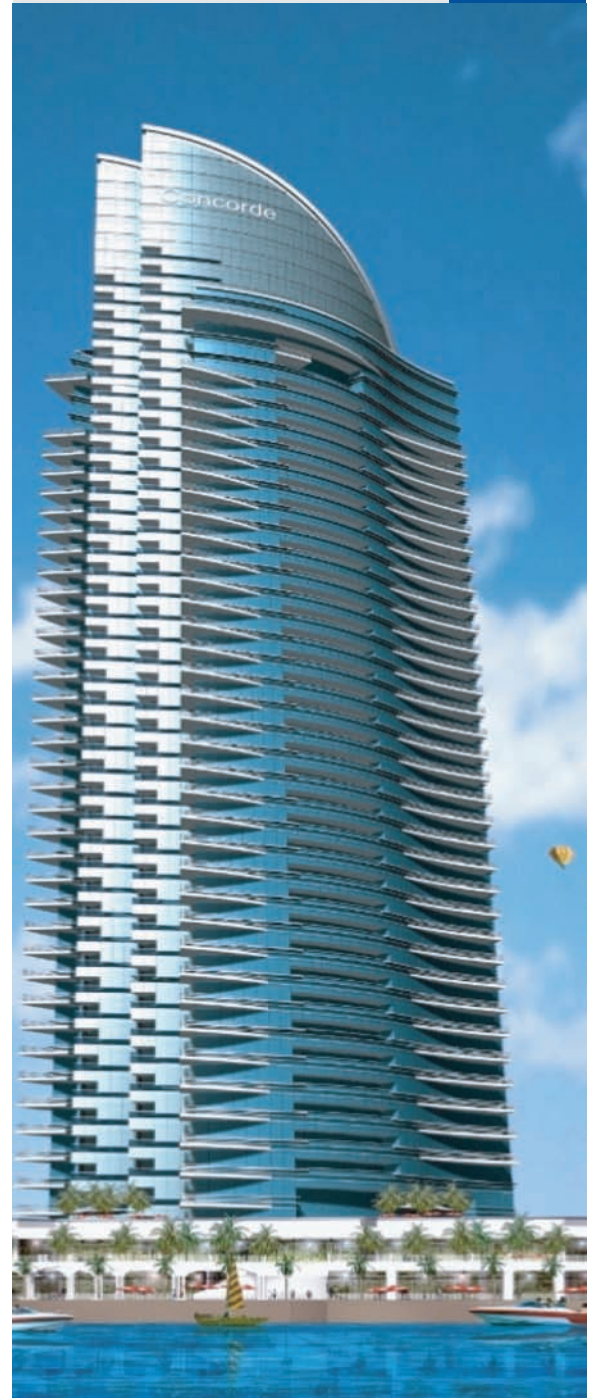
We will analyze your application to recommend the most effective material, even if it requires custom formulations - from UL-94 approved Fire Resistant Gasket to Silicone Sealant Compatible Compounds. ALP offers compounds that meet ASTM, DIN, BS, JASO, EN and almost any other specifications.

Testing and Evaluation :

ALP has an In-House Testing Laboratory and it is approved by the Government of India. We offer In-House Test Facilities and in the unlikely eventuality that some special tests cannot be done, the same are arranged in reputable testing facilities in India, Europe and USA.

Die Development :

ALP has its own Die Shop and Tool Room, where Dies and Moulds are developed according to customers' specifications.



Project : Concord Tower
Gaskets by : ALP Overseas
Client : 32 Group
Consultant : Arif & Bintok
Contractor : Al Rostamani Pegel L.L.C.
Floor : G+2P+38 storey



Coloured EPDM

ALP is the first and only Company in India and Middle East to introduce the Coloured EPDM Technology in the above mentioned markets.



Project : Reef Tower
Gaskets by : ALP Overseas
Client : Reef Real Estate
Consultant : KEO International
Contractor : Emirates Belbadi Cont. Co.
Floor : 3B+G+31+ Mech.



Silicone

Chemists at Corning Glass and General Electric were investigating heat-resistant materials for use as resinous binders when they synthesized the first silicone polymer. Corning Glass formed a joint venture with Dow Chemical in 1943 to produce the new class of silicone materials.

Silicone Rubber offers good resistance to extreme temperatures from -55°C to $+300^{\circ}\text{C}$ at extreme temperatures, the tensile strength, elongation, tear strength and compression set can be far superior to conventional rubbers although still low relative to other materials. Organic rubber has a carbon to carbon backbone which can leave them susceptible to UV, Ozone, Heat and Other Ageing factors that Silicone Rubber can withstand well. It is the ideal elastomer of choice in many extreme environments.

The disadvantages are that compared to organic rubber, silicone rubber has very low tensile strength. Silicone Rubber is an inert material and when properly handled silicone does not stain, corrode or in any way adversely effect material with which it comes in contact. Conventionally silicones have been classified as slow Burning.

Silicone Strength

- Outstanding Resistance to High Heat.
- Excellent Flexibility at Low Temperatures.
- Low Compression Set.
- Very Good Electrical Insulation.
- Excellent Resistance to Weather, Ozone, Sunlight and Oxidation.
- Superior Colour Stability.
- Flame Retardant.

Silicone Limitations

- Poor Resistance to Abrasion, Tear and Cut Growth.
- Low Tensile Strength.
- Inferior Resistance to Oil, Gasoline and Solvents.
- Poor Resistance to Alkalis and Acids.



Project : Burlington Tower
Gaskets by : ALP Overseas
Client : Deyaar
Consultant : Arex
Contractor : Emirates Man
Floor : 3B+G+4P+35 Typical Floors
Location : United Arab Emirates



Silicone Sealant Compatible EPDM Rubber Extrusions

What is Compatibility?

Compatibility is defined as the ability of two materials to exist in contact or close proximity to each other while having no deleterious or adverse effects on each other.

Examples of compatible Materials : Glass and Aluminium, Wood and Plastics, Brass and Wood, Plastics and Aluminium, Porcelain and Paper, et cetera.

Examples of Incompatible Material: Acid and Aluminium, Sugar and Water, Different Groups of Blood, Ice and Heat, Wax and Heat, Petrol and Fire, et cetera.

Reasons of Incompatibility between EPDM and Silicone Sealants :

- EPDM is an Organic Product. It has to be plasticized with Process Oils and other plasticizers like Calcium Carbonate, Stearic Acid, Carbon and many other curatives and chemicals to make flexible gaskets out of it.
- Silicone Sealants are “Non-Oil” based Inorganic Products and one of the most excellent adhesives for bonding Aluminium with Glass.
- When “Organic” EPDM Gaskets “Plasticized” with “Process Oils” come in contact with “Inorganic” “Non-Oil Based” Silicone Sealants the “Oil and Plasticizers” from EPDM Gaskets move/ migrate into the Silicone Sealants and contaminate it.

What are the symptoms of Incompatibility?

The first symptom is that the Silicone Sealant begins to change colour, since something (the plasticizers) is moving/ migrating from the EPDM Gasket into Silicone Sealant. This colour change is reported by Lab Researchers on a Zero to Five Point Scale as follows:

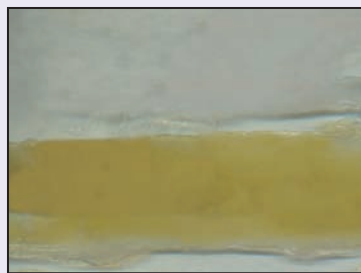




Scale Grading	Colour Change	Change Description
0	None	No Change from Control
1	Very Very Slight	Change So Slight that you are Not Sure if it is Real
2	Very Slight	Faint Colour Generally Yellow
3	Slight Light Colour	Commonly Yellow, Orange, Pink or Brown
4	Severe	Distinct Colour possibly Red or Purple in addition to Yellow, Orange, Pink or Brown.
5	Very Severe	Dark Colours may be Black As Well as Other Colours Mentioned Above.

Colour Change :

- Colour change indicates a chemical reaction between the Gasket material and “Structural Silicone Sealants.”
- This reaction may in the long term, cause a complete loss of adhesion between the glass and the substrate when they are exposed to heat and ultraviolet in the sunlight.



- Experience shows that Organic rubbers such as EPDM and Neoprene cause colour change and loss of adhesion and therefore are judged “Incompatible” with “Silicone Sealants” in Structural Glazing Systems.



Loss of Adhesion :

- The second symptom of Incompatibility is “Loss of Adhesion”.
- This may lead to significant deterioration in the silicone sealant's adhesive strength or adhesion or bonding with glass and metal surface.
- ACCEPTABLE ADHESION is required to limit air and water infiltration in the Building.
- In other words adhesion may be required to make sure that the System will be "Weather Tight".

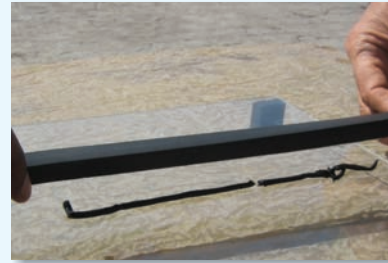
ASTM C-1087 Test:

- The standard test for determining compatibility of liquid applied sealants with accessories used in Structural Glazing Systems is ASTM C-1087 test.
- Researchers prepare Test Specimens with a Black Sealant in contact with a gasket specimen, alongwith a light coloured or translucent sealant, placed together on a clean glass substrate.
- After the sealant has cured for one week, the test specimens are exposed to Ultra Violet Radiation and Heat.
- The test specimens are removed after 21 days and cooled to Room Temperature. They are examined for any colour change and pulled back at a 90 degrees angle to determine the mode of failure – Cohesive or Adhesive Failure.





Cohesive Versus Adhesive Failure :



100% COHESIVE FAILURE

- EPDM Rubber gasket has passed. Gasket did not loose adhesion. Job can be repaired, Repair instructions : Re apply silicone sealant in space made by 90 Degree angle and Re-Seal the Gasket with the substrate.
- Compatible Gasket : Weathertight Building

100% ADHESIVE FAILURE

- EPDM Gasket failed. EPDM Gasket lost adhesion.
- Job cannot be repaired. Even if you reapply silicon sealant in space made by 90 Degree Angle, the gasket will “OPEN UP” again, since it does not adhere with the silicone sealant, due to migration of Fluids/ Plasticisers/ Oils
- Incompatible Gasket : Infiltration of Rain Water, Dust, Heat, etc. in the system

COMPATIBILITY KEY TO LONGEVITY:

The Structural Glazing Systems Adhesion, Weatherability and Durability, as well as aesthetic implications, over the long term depend upon all products being compatible through out the Projects Life. Without adequate testing the Glazier owns the job and all responsibility associated with it.

ALP has pioneered the Silicone Sealant Compatible EPDM Compound in the Indian and Middle East Market

ARCHITECT'S GUIDE TO SELECTION OF MATERIALS

PROPERTIES	NATURAL RUBBER		SBR	BUTYL	EPDM	NBR	SILICONE	NEOPRENE	HYPALON
Tensile Strength (PSI)	Pure Gum	Over 3,000	Below 1,000	Over 1,500	Over 3,000	Below 1,000	Below 1,500	Over 3,000	Over 2,510
	Black Loaded (Shore A)	Over 3,000	Over 2,000	Over 2,000	Over 3,000	Over 2,000		Over 3,000	Over 3,000
Hardness Range		30-90	40-90	40-75	40-90	40-96	40-85	40-95	40-95
Specific Gravity	Base Materials	0.93	0.94	0.92	0.85	1.00		1.23	1.28
Adhesion to Metal		Excellent	Excellent	Good	Good	Excellent		Excellent	Excellent
Tear Resistance		Good	Fair	Good	Good	Fair	Poor	Good	Fair
Abrasion Resistance		Excellent	Good	Good	Good	Good	Poor	Excellent	Excellent
	Compression Set	Good	Good	Fair	Good	Good	Fair	Fair	Fair
Rebound	Cold	Excellent	Good	Bad	Good	Good	Excellent	Very Good	Good
	Hot	Excellent	Good	Very Good	Good	Good	Excellent	Very Good	Good
Dielectric Strength		Excellent	Excellent	Excellent	Excellent	Poor	Good	Good	Excellent
Electrical Insulation		Good	Good	Good	Excellent	Poor	Excellent	Fair	Good
Permeability to Gases		Fair	Fair	Very Low	Poor	Fair	Fair	Low	Very Low
Acid Resistance		Fair	Fair	Excellent	Good	Good	Excellent	Good	Very Good
	Aliphatics	Poor	Poor	Poor	Poor	Excellent	Poor	Good	Good
SOLVENT RESISTANCE	Aromatics	Poor	Poor	Poor	Poor	Good	Poor	Good	Good
	Ketones	Good	Good	Good	Good	Poor	Fair	Poor	Fair
	Lacquer	Poor	Poor	Poor	Good	Poor	Fair	Poor	Poor
	Swell in Lubricating Oil	Poor	Poor	Poor	Poor	Fair	Poor	Poor	Poor
Oil & Gasoline		Poor	Poor	Poor	Poor	Very Good	Fair	Good	Good
Animal & Vegetable Oils		Poor	Poor	Excellent	Good	Excellent	Fair	Good	Good
Water Absorption		Very Good	Good	Very Good	Good	Fair	Good	Good	Very Good
Oxidation		Good	Good	Excellent	Excellent	Good	Excellent	Excellent	Excellent
Ozone		Fair	Fair	Excellent	Excellent	Fair	Excellent	Excellent	Outstanding
Sunlight Aging		Poor	Poor	Very Good	Excellent	Poor	Excellent	Very Good	Outstanding
Heat Aging		Good	Very Good	Excellent	Excellent	Excellent	Outstanding	Excellent	Excellent
Flame		Poor	Poor	Poor	Poor	Poor	Fair	Good	Good
Heat		Good	Excellent	Excellent	Excellent	Excellent	Excellent	Excellent	Excellent
Cold		Excellent	Excellent	Good	Excellent	Good	Excellent	Good	Good

RESISTANCE TO



PROJECTS



Project : Rose Tower
Gaskets by : ALP Overseas
Aluminium : ALICO
Fabricator : ALICO



Project : Saba Twin Tower
Gaskets by : ALP Overseas
Client : Saba Real Estate
Consultant : RMJM
Contractor : Arabian Construction Co.
Floor : G+3+30 storey



Project : Emirates Financial Tower
Gaskets by : ALP Overseas
Consultant : CPG-TSS
Contractor : TAV Gulf



Project : Iris Bay Tower
Gaskets by : ALP Overseas
Client : Sheth Estate International
Consultant : Atkins
Contractor : TAV Gulf



Project : Liberty House
Gaskets by : ALP Overseas
Client : ETA Star Properties
Consultant : Holford Associates
Contractor : Ascon
Floor : B+G+36 storey



Project : Metropolis Tower
Gaskets by : ALP Overseas
Client : Deyaar
Consultant : LACASA
Contractor : Emirates Man Contracting
Floor : 3B+G+4P+22 Typical
Floors Commercial & Office
building on Plot No.
BB.A03.031 at Business Bay



Project : Marinascape
Gaskets by : ALP Overseas
Client : Trident International Holdings
Consultant : Archon
Contractor : Larsen & Toubro
Floor : 25/33 floors



Project : Dubai Marina Mall
Gaskets by : ALP Overseas
Aluminum
Fabricator : Multiforms L.L.C.



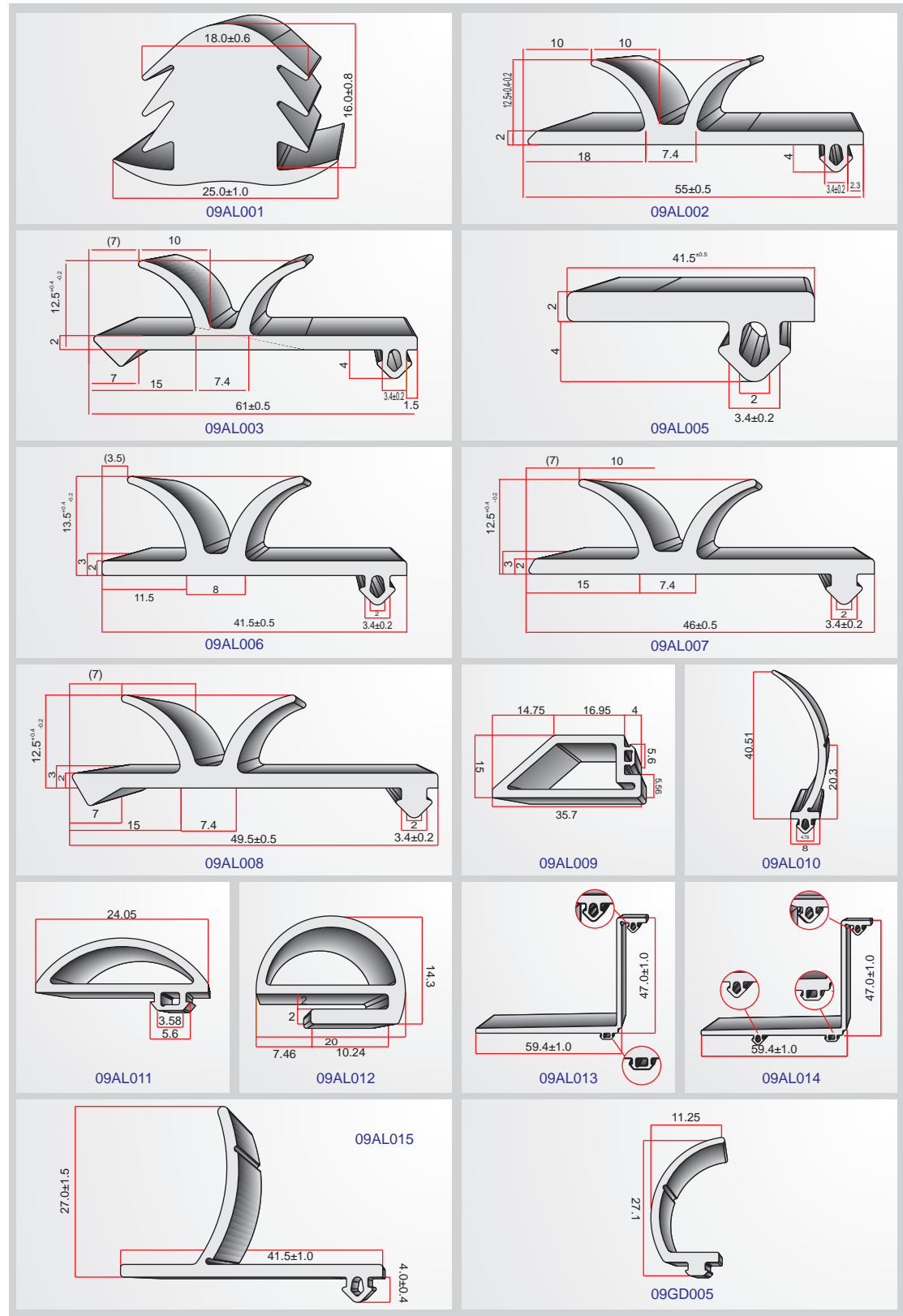
Project : The Liwa Centre
Gaskets by : ALP Overseas
Location : Abu Dhabi

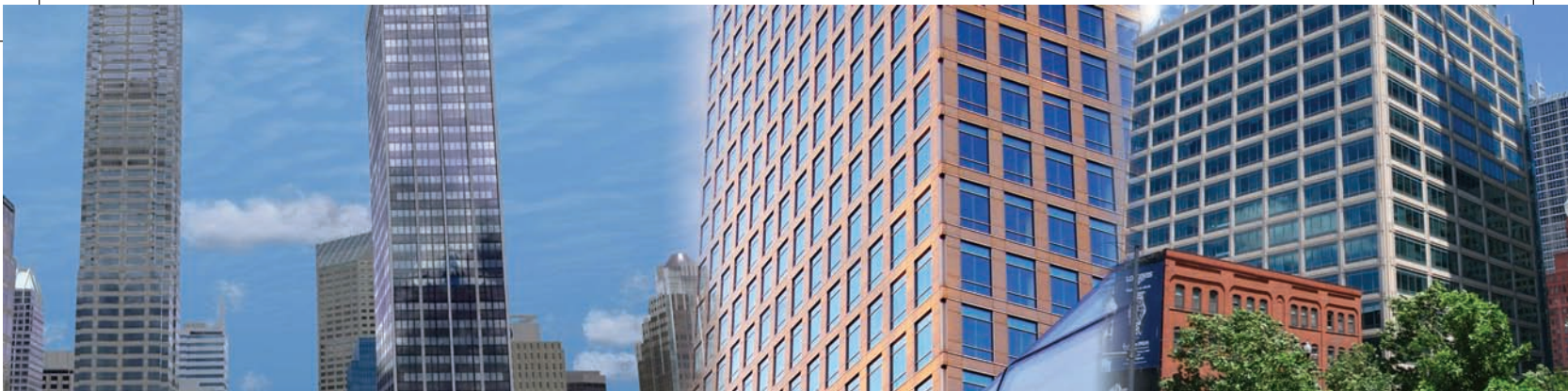


Project : Tiffany Tower
Gaskets by : ALP Overseas
Client : Tiffany Realty
Consultant : W.S. Atkins
Contractor : Al Rostamani Pegel L.L.C.
Floor : G+3P+38+Mech storey

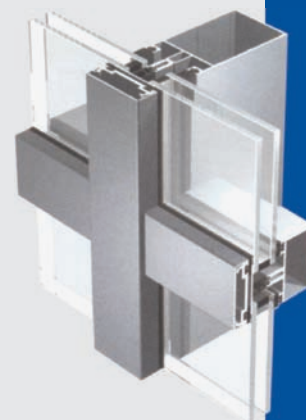
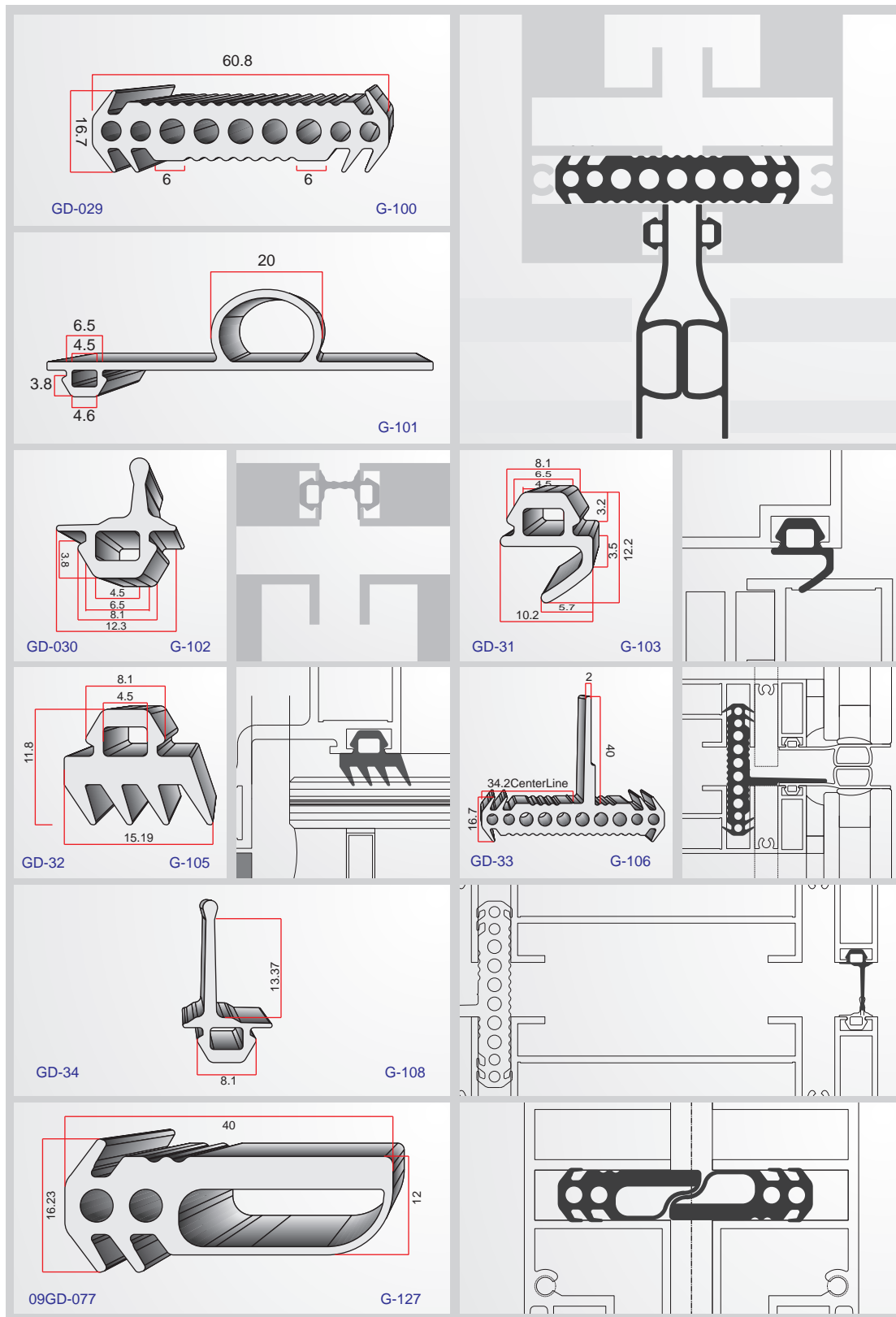


Schuco Unitized System



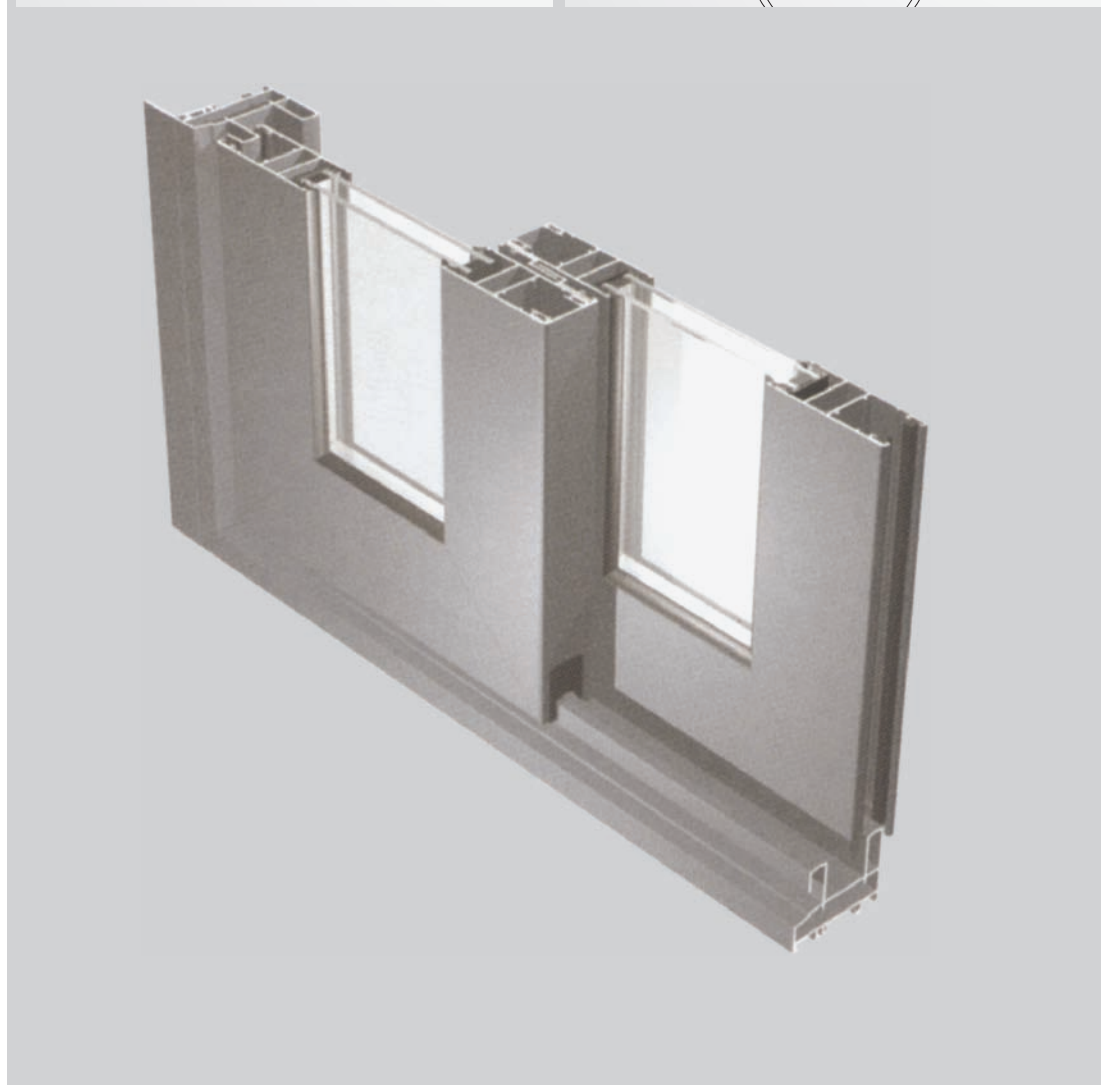
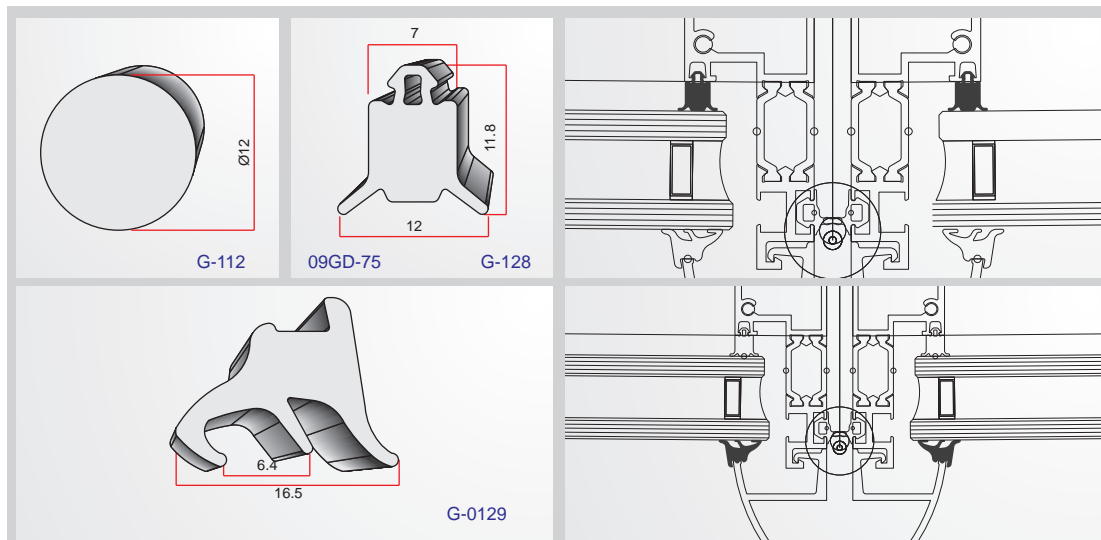


Metal Plan Unitized System





Metal Plan Unitized System





Other Unitized System

<p>09GD09 G01</p>	<p>09GD18 G02</p>	<p>09GD19 G03</p>	<p>09GD24 G04</p>	
<p>09GD20 G05</p>	<p>09GD21 G06</p>	<p>09GD23 G07</p>	<p>09GD22 G08</p>	
<p>09GD14 EG01</p>	<p>09GD15 EG02</p>	<p>09GD16 EG03</p>	<p>09GD17 EG04</p>	
<p>09GD069 GA11</p>	<p>09GD070 GA12</p>	<p>09GD10 GA02</p>	<p>09GD11 GA03</p>	
<p>GG04 09GD082</p>	<p>GG05 09GD083</p>	<p>GG06 09GD084</p>	<p>GG07 09GD085</p>	<p>GG11</p>
<p>GG08 09GD086(I)</p>	<p>GG09 09GD087</p>	<p>GG10 09GD088 (I)</p>	<p>GG11 09GD089 (I)</p>	<p>09GD079</p>



Gutmann System



750332 09AA001	750301 09AA002	750216 09AA003	750116 09AA004	
770021 09AA021(I)	09AA005	09AA006	720001 09AA007(I)	750312 09AA008(I)
770028 09AA031(I)	750212 09AA009(I)	750210 09AA010	750112 09AA011	750110 09AA012(I)
770004 09AA019	750031 09AA013	750010 09AA014	750004 09AA015(I)	770025 09AA016(I)

EPDM Rubber Mouldings

750028 09AA036(I)	750030 09AA037(I)	760027/29 09AA038(I)	760028 09AA039(I)	760030 09AA040(I)
			750027 09AA035(I)	

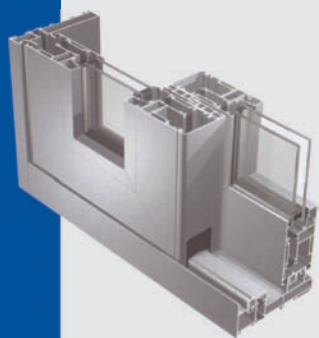
Gulf Extrusion System

<p>GE#600.13.001 ALP-09029/10</p>	<p>GE#600.13.002 ALP-09029/12</p>	<p>GE#600.13.003 ALP-09029/02</p>	<p>CW/70/RUB3 GE#600.13.004 ALP-09029/14</p>	<p>GE#T-RUB-1(BIG) ALP-09029/33</p>
<p>GE#600.13.005 ALP-09029/16</p>	<p>GE#600.13.006 ALP-09029/04</p>	<p>GE#600.13.007 ALP-09029/18</p>	<p>GE#600.13.008 ALP-09029/20</p>	<p>GE#566567/RUB-1 ALP-09029/34</p>
<p>GE#45-FR-RUB ALP-09029/65</p>	<p>GE#45-SH-RUB ALP-09029/66</p>	<p>GE#45-MID-RUB ALP-09029/67</p>	<p>GE#CW/70/RUB1 ALP-09029/31</p>	<p>GE#09029/11R ALP-09029/35</p>
<p>GE#CW/70/RUB2 ALP-09029/32</p>	<p>GE#CW/70/RUB4 ALP-09029/30</p>	<p>GE#900.13.004 ALP-09020/07</p>	<p>GE#900.13.005 ALP-09029/06</p>	<p>GE#Pressure Plate ALP-09039/02</p>
<p>GE#900.13.006 ALP-09020/06</p>	<p>GE#900.13.007 ALP-09029/22</p>	<p>GE#900.13.008 ALP-09029/24</p>	<p>GE#10566 ALP-09029/26</p>	<p>GE#Curtain Wall ALP-19041</p>
<p>GE#10560 ALP-09029/28</p>	<p>GE#Pressure Plate ALP-19039</p>	<p>GE#Pressure Plate ALP-19040</p>	<p>GE#P-Rubber ALP-09053/01</p>	<p>GE#Curtain Wall ALP-19054</p>



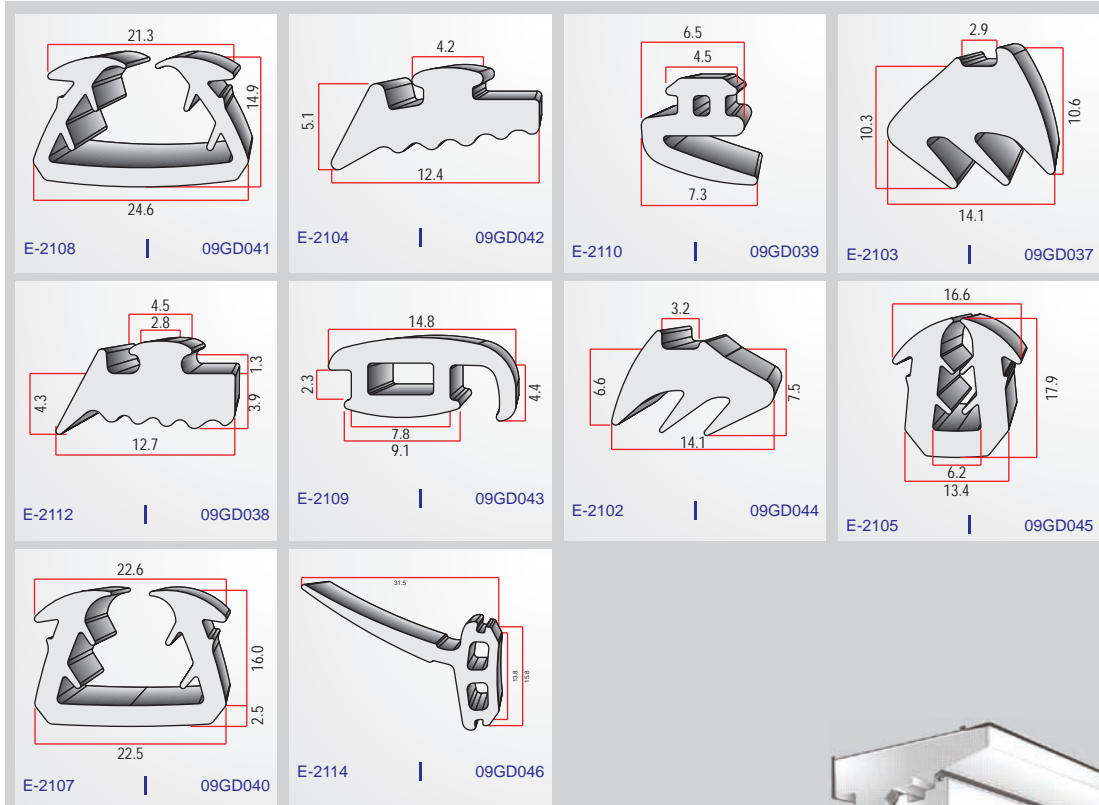
Alumil System

<p>SOL-157912 09GD056</p>	<p>MO-6820 09GD057</p>	<p>M-081 09GD047</p>	<p>BMP-711 09GD055</p>
<p>MO-9300 09GD054</p>	<p>62422001 09GD053</p>	<p>62422000 09GD052</p>	<p>MO-9500 09GD051</p>
<p>MO-9500 09GD050</p>	<p>SOL-91106 09GD059</p>	<p>BMP 09GD063</p>	<p>MO-93-BMP 09GD061</p>
<p>BMP-706 09GD049</p>	<p>MO-6860 09GD065</p>	<p>MO-6300 09GD048</p>	
<p>MO-7406 09GD058</p>	<p>BMP-705 09GD062</p>		
<p>BMP-707 09GD064</p>	<p>BMP-10916 09GD060</p>		





Balexco System





Indian System

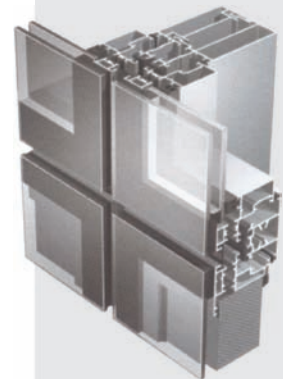
<p>ALP19130</p>	<p>ALP19214</p>	<p>ALP19243</p>	<p>ALP19244</p>
<p>ALP19245</p>	<p>ALP19246</p>	<p>ALP19256</p>	<p>ALP19160</p>
<p>ALP19159</p>	<p>ALP19202</p>	<p>ALP19221</p>	<p>ALP19222</p>
<p>ALP19223</p>	<p>ALP19233</p>	<p>ALP19235</p>	<p>ALP09GE085</p>
<p>ALP09GE086</p>	<p>ALP09GE087</p>	<p>ALP09GE088</p>	<p>ALP09GE089</p>
<p>ALP09GE042</p>	<p>ALP09025/27</p>	<p>ALP09GE098</p>	<p>ALP19362</p>





Indian System

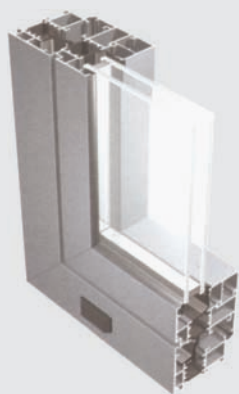
<p>ALP-09043/03</p>	<p>ALP-09045/02A</p>	<p>ALP-09045/03</p>	<p>ALP-09045/05</p>
<p>ALP-09045/07</p>	<p>ALP-09045/08</p>	<p>ALP-09045/08A</p>	<p>ALP-09045/09</p>
<p>ALP-09045/10</p>	<p>ALP-09045/11</p>	<p>ALP-09045/12</p>	<p>ALP-09045/17N</p>
<p>ALP-09045/18</p>	<p>ALP-09045/19</p>	<p>ALP-09045/20A</p>	<p>ALP-09045/20B</p>
<p>ALP-09045/21</p>	<p>ALP-09045/22</p>	<p>ALP-09046/02</p>	<p>ALP-09046/03</p>
<p>ALP-09046/04</p>	<p>ALP-09046/05</p>	<p>ALP-09046/06</p>	<p>ALP-09048/01</p>





Miscellaneous Gaskets

<p>ALP-09024/17</p>	<p>ALP-09024/18</p>	<p>ALP-09036/1</p>	<p>ALP-09036/3</p>
<p>ALP-09040/1</p>	<p>ALP-09041/4</p>	<p>ALP-09045/4</p>	<p>ALP-09024/20</p>
<p>ALP-09024/22</p>	<p>ALP-09024/23</p>	<p>ALP-09024/24</p>	<p>ALP-09024/25</p>
<p>ALP-09024/26</p>	<p>ALP-09024/27</p>	<p>ALP-09029/1</p>	<p>ALP-09029/5</p>
<p>ALP-09045/6</p>	<p>ALP-09045/13</p>	<p>ALP-09045/26</p>	<p>ALP-09046/1</p>
<p>ALP-09047/1</p>	<p>ALP-09052/2</p>	<p>ALP-09052/3</p>	<p>ALP-09054/1</p>





Miscellaneous Gaskets

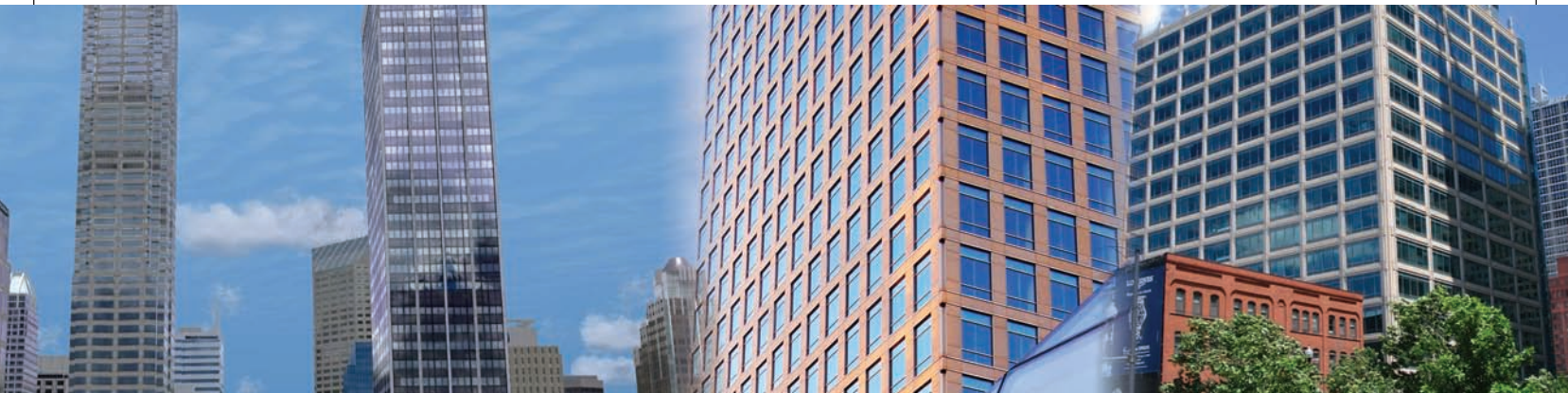
<p>ALP-09054/2</p>	<p>ALP-09054/3</p>	<p>ALP-09054/4</p>	<p>ALP-09058/10</p>
<p>ALP-09060/1</p>	<p>ALP-09062/1</p>	<p>ALP-09066/16</p>	<p>ALP-09070/3</p>
<p>ALP-09070/9</p>	<p>ALP-09070/22</p>	<p>ALP-09020/01</p>	<p>ALP-09020/02</p>
<p>ALP-09020/03</p>	<p>ALP-09020/04</p>	<p>ALP-09020/05</p>	<p>ALP-09020/08</p>
<p>ALP-09082/1</p>	<p>ALP-09087/13</p>	<p>ALP-09087/16</p>	<p>ALP-09087/32</p>
<p>ALP-09023/12</p>	<p>ALP-09023/13</p>	<p>ALP-09023/17</p>	<p>ALP-09023/18</p>





Miscellaneous Gaskets

<p>ALP-09023/19</p>	<p>ALP-09023/21</p>	<p>ALP-09024/01</p>	<p>ALP-09024/02</p>
<p>ALP-09024/05</p>	<p>ALP-09024/06</p>	<p>ALP-09024/07</p>	<p>ALP-09024/08</p>
<p>ALP-09024/10</p>	<p>ALP-09024/11</p>	<p>ALP-09024/12</p>	<p>ALP-09028/01</p>
<p>ALP-09028/02</p>	<p>ALP-09028/03</p>	<p>ALP-09029/11</p>	<p>ALP-09028/04</p>
<p>ALP-09028/05</p>	<p>ALP-09028/06</p>	<p>ALP-09029/3</p>	<p>ALP-09029/07</p>
<p>ALP-09034/01</p>	<p>ALP-09034/02</p>	<p>ALP-09036/04</p>	<p>ALP-09037/01</p>



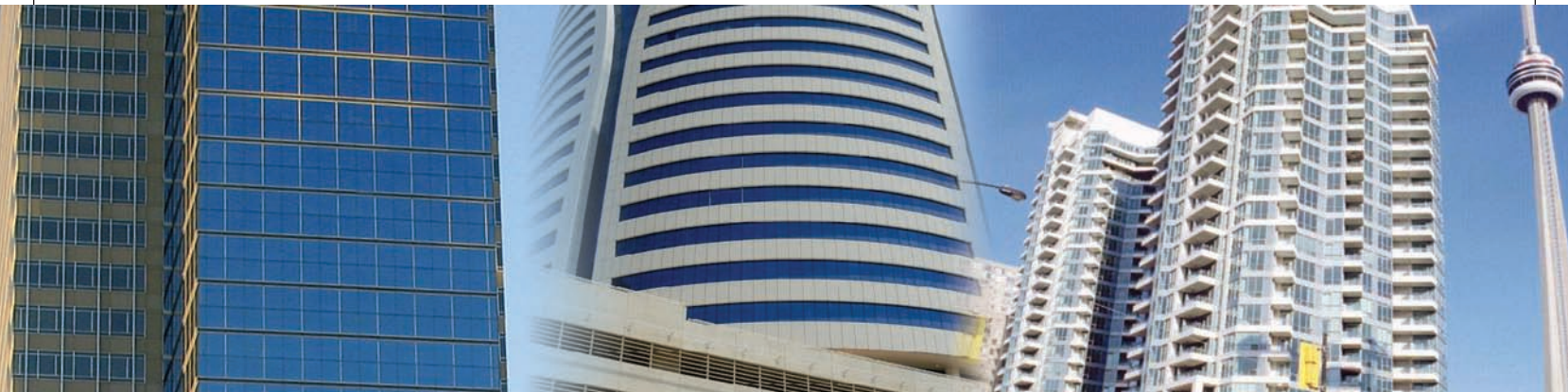
Miscellaneous Gaskets

<p>ALP-09037/02</p>	<p>ALP-09039/01</p>	<p>ALP-09040/02</p>	<p>ALP-09040/03</p>
<p>ALP-09040/04</p>	<p>ALP-09040/06</p>	<p>ALP-09040/07</p>	<p>ALP-09040/08</p>
<p>ALP-09041/01</p>	<p>ALP-09041/02</p>	<p>ALP-09041/03</p>	<p>ALP-09041/05</p>
<p>ALP-09041/06</p>	<p>ALP-09041/07</p>	<p>ALP-09041/08</p>	<p>ALP-09041/09</p>
<p>ALP-09041/10</p>	<p>ALP-09041/11</p>	<p>ALP-09041/12</p>	<p>ALP-09041/13</p>
<p>ALP-09041/14</p>	<p>ALP-09043/01</p>	<p>ALP-09045/01</p>	<p>ALP-09043/02</p>



Miscellaneous Gaskets

<p>ALP-09023/02</p>	<p>ALP-09023/04</p>	<p>ALP-09023/05</p>	<p>ALP-09023/06</p>
<p>ALP-09023/07</p>	<p>ALP-09023/08</p>	<p>ALP-09023/09</p>	<p>ALP-09023/10</p>
<p>ALP-09023/11</p>	<p>ALP-09020/09</p>	<p>ALP-09020/10</p>	<p>ALP-09020/11</p>
<p>ALP-09020/12</p>	<p>ALP-09020/13</p>	<p>ALP-09021/01</p>	<p>ALP-09021/02</p>
<p>ALP-09021/03</p>	<p>ALP-09023/01</p>	<p>ALP-09023/22</p>	<p>ALP-09023/23</p>
<p>ALP-09024/9</p>	<p>ALP-09024/13</p>	<p>ALP-09024/14</p>	<p>ALP-09024/16</p>



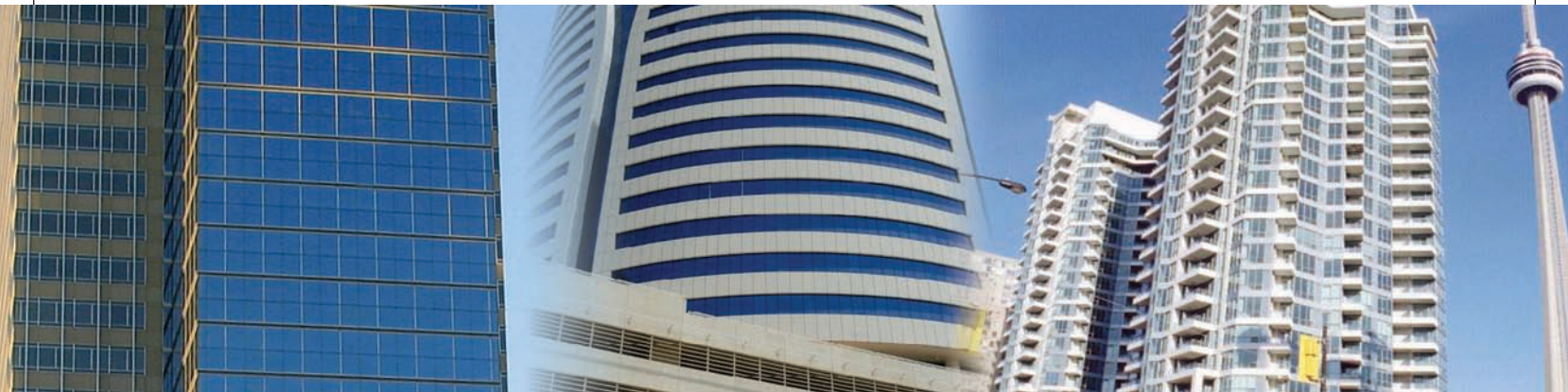
Miscellaneous Gaskets

<p>ALP-09051/01</p>	<p>ALP-09049/01</p>	<p>ALP-09050/01</p>	<p>ALP-09051/02</p>
<p>ALP-09051/03</p>	<p>ALP-09051/04</p>	<p>ALP-09051/05</p>	<p>ALP-09051/06</p>
<p>ALP-09051/07</p>	<p>ALP-09051/10</p>	<p>ALP-09051/11</p>	<p>ALP-09052/01</p>
<p>ALP-09058/08</p>	<p>ALP-09058/09</p>	<p>ALP-09064/01</p>	<p>ALP-09064/02</p>
<p>ALP-09070/01</p>	<p>ALP-09070/02</p>	<p>ALP-09070/04</p>	<p>ALP-09070/05</p>
<p>ALP-09070/06</p>	<p>ALP-09055/01</p>	<p>ALP-09055/02</p>	<p>ALP-09058/01</p>



Miscellaneous Gaskets

<p>ALP-09058/02</p>	<p>ALP-09058/03</p>	<p>ALP-09058/04</p>	<p>ALP-09058/05</p>
<p>ALP-09058/06</p>	<p>ALP-09070/17</p>	<p>ALP-09070/18</p>	<p>ALP-09070/19</p>
<p>ALP-09070/20</p>	<p>ALP-09070/21</p>	<p>ALP-09084/02A</p>	<p>ALP-09070/07</p>
<p>ALP-09070/08</p>	<p>ALP-09070/10</p>	<p>ALP-09070/11</p>	<p>ALP-09070/12</p>
<p>ALP-09070/13</p>	<p>ALP-09070/14</p>	<p>ALP-09070/15</p>	<p>ALP-09070/16</p>
<p>ALP-19053</p>	<p>ALP-19055</p>	<p>ALP-19082</p>	

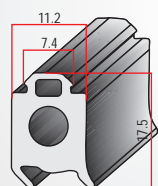


Miscellaneous Gaskets

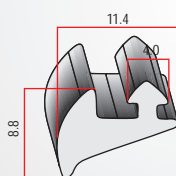
<p>ALP-09024/36</p>	<p>ALP-09024/39</p>	<p>ALP-09024/37</p>	
<p>ALP-19084</p>	<p>ALP-19092</p>	<p>ALP-19097</p>	<p>ALP-19099</p>
<p>ALP-16002</p>	<p>ALP-16003</p>	<p>ALP-16004</p>	<p>ALP-19080</p>
<p>ALP-19125</p>	<p>ALP-19130</p>	<p>ALP-19121</p>	<p>ALP-09021/4</p>
<p>ALP-19031</p>	<p>ALP-19032</p>	<p>ALP-19042</p>	<p>ALP-19043</p>
<p>ALP-19044</p>	<p>ALP-09029/44</p>	<p>ALP-09029/45</p>	<p>ALP-09029/46</p>



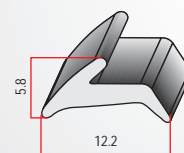
Miscellaneous Gaskets



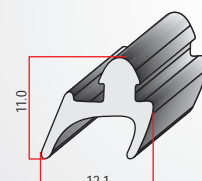
ALP-09029/47



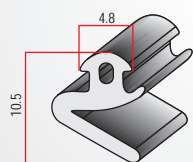
ALP-19150



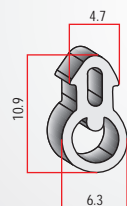
ALP-19151



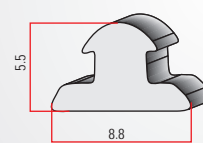
ALP-19159



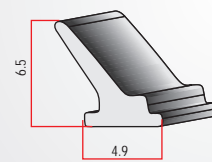
ALP-19160



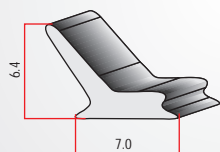
ALP-19161



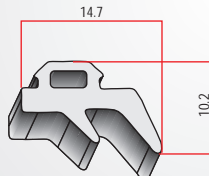
ALP-19162



ALP-19170



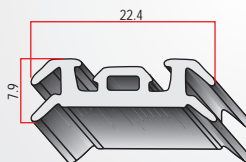
ALP-19171



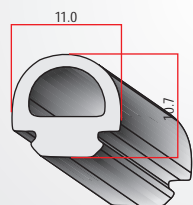
ALP-09029/48



ALP-09029/49



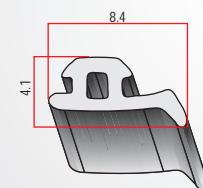
ALP-09029/50



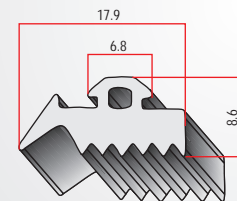
ALP-09029/58



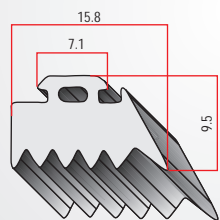
ALP-09029/60



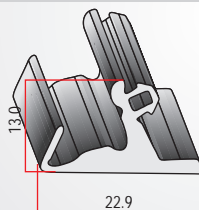
ALP-09029/61



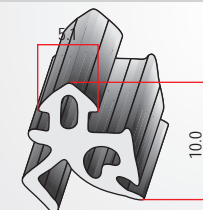
ALP-09023/24



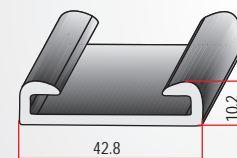
ALP-09023/25



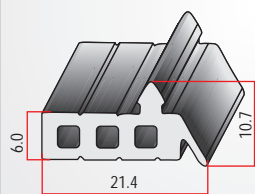
ALP-09087/46



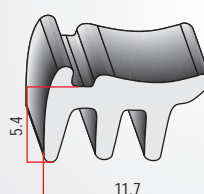
ALP-09087/50



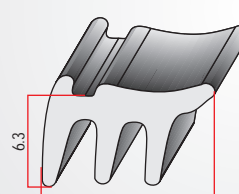
ALP-09087/58



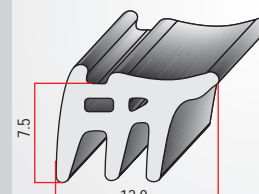
ALP-09077/26



ALP-09024/45



ALP-09024/46



ALP-09024/47



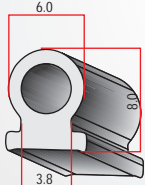
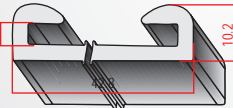

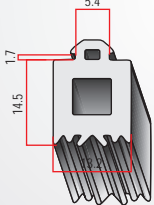
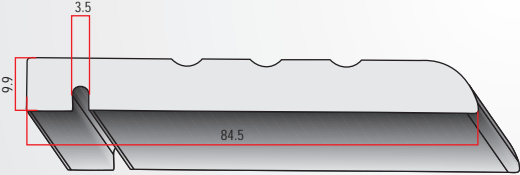
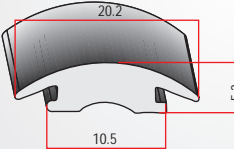
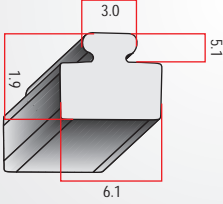
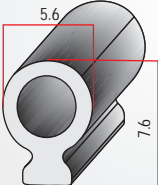

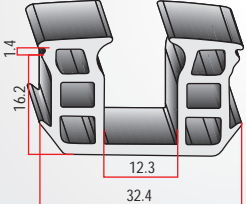
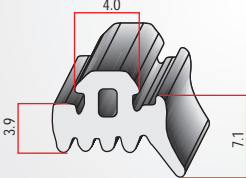
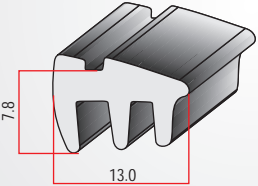
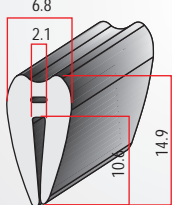
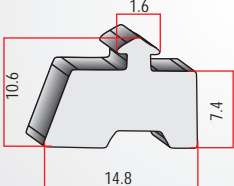
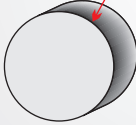
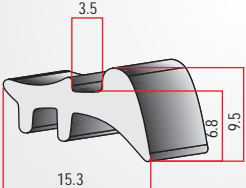
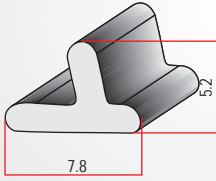
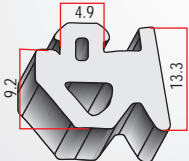
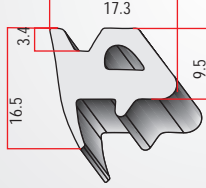
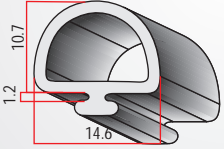
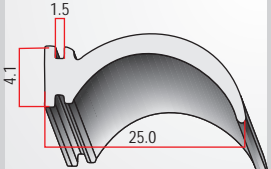
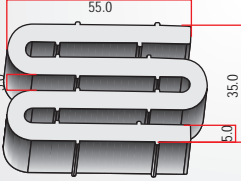
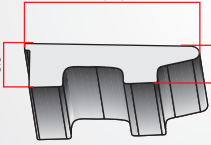


Miscellaneous Gaskets

<p>ALP-09024/48</p>	<p>ALP-09024/32</p>	<p>ALP-09024/33</p>	<p>ALP-09024/34</p>
<p>ALP-09024/35</p>	<p>ALP-09024/40</p>	<p>ALP-09024/43</p>	
<p>ALP-09024/44</p>	<p>ALP-09029/38</p>	<p>ALP-09029/40</p>	<p>ALP-09029/41</p>
<p>ALP-09029/42</p>	<p>ALP-09024/49</p>	<p>ALP-09024/51</p>	<p>ALP-09024/52</p>
<p>ALP-09024/50</p>	<p>ALP-09024/53</p>	<p>ALP-09024/54</p>	
<p>ALP-09024/55</p>	<p>ALP-09024/28</p>	<p>ALP-09024/30</p>	<p>ALP-09029/62</p>



Miscellaneous Gaskets

 <p>ALP-09029/75</p>	 <p>ALP-09087/58</p>	 <p>ALP-09087/64</p>	 <p>ALP-09023/26</p>
 <p>ALP-19182</p>	 <p>ALP-09024/56</p>	 <p>ALP-09024/57</p>	
 <p>ALP-09024/58</p>	 <p>ALP-09024/59</p>	 <p>ALP-09024/60</p>	 <p>ALP-09024/61</p>
 <p>ALP-09024/62</p>	 <p>ALP-09024/65</p>	 <p>ALP-09024/67</p>	 <p>ALP-09024/68</p>
 <p>ALP-09024/70</p>	 <p>ALP-09024/75</p>	 <p>ALP-09024/76</p>	 <p>ALP-09024/77</p>
 <p>ALP-09024/78</p>	 <p>ALP-09024/79</p>	 <p>ALP-09024/81</p>	 <p>ALP-09024/83</p>



Miscellaneous Gaskets

<p>ALP-09024/84</p>	<p>ALP-09024/85</p>	<p>ALP-09024/41</p>	<p>ALP-09024/42</p>
<p>ALP-09024/38</p>		<p>ALP-09084/02B</p>	
<p>ALP-09084/05</p>		<p>ALP-09084/07</p>	

Certificates

Tremco
 Tremco Incorporated
 3735 Green Road • Beachwood, Ohio 44122

To: Keith Shearman
 From: Lisa Chavers
 CC: Jon Harbaugh

Date: May 1, 2007
 Subject: Index Tower

On Tuesday, April 3, 2007 we received EPDM slab samples from the job site for the Index Tower Project for ASTM C 1087 and to confirm adhesion. The following test was performed using Spectrem[®] 2 and Proglaze[®] II:

- Tab Adhesion Test
- ASTM C 7940.1, Test Method for Adhesion in Peel of Elastomeric Joint Sealants
- ASTM C 1087-00, Test Method for Determining Compatibility of Liquid Applied Sealants with Accessories Used in Structural Glazing Systems
- ASTM C 124893, Test Method for Staining of Porous Substances by Joint Sealants

Test results are attached. A summary of results is:

- Spectrem 2 and Proglaze II exhibited satisfactory adhesion with and without Primer #10 on the EPDM slab-POWOW vide DHL AWB# 2118016611 sample submitted
- Spectrem 2 Black in contrast to Spectrem 2 White exhibited no staining and 100% cohesive failure on the EPDM slab-POWOW vide DHL AWB# 2118016611 sample submitted
- Proglaze II Black in contrast to Spectrem 2 White exhibited no staining and 100% cohesive failure on the EPDM slab-POWOW vide DHL AWB# 2118016611 sample submitted

If you have any questions, or if you require additional information, please contact the Technical Services group.

An **RPM** Company

Tremco
 Tremco Incorporated
 3735 Green Road • Beachwood, Ohio 44122

R/D TEST NO.: 7098
 PROJECT REFERENCE: Index Tower
 SALES REPRESENTATIVE: Keith Shearman
 CUSTOMER: GTP Overseas Private Limited
 LOCATION: Middle East

TEST RESULTS

Adhesion Testing: Tremco Standard Test 786 (Tab Method)
 Substrate was cleaned with IPA 2x to prep prior to application of sealant/primer.

Substrate (Trade Name)	Primer	Sealant Tested	Adhesion - 14 Days at 70 °F, 50% R.H.	Adhesion - 7 Days Water Immersion
EPDM SLABS - POWOW vide DHL AWB# 2118016611	NONE	SPECTREM [®] 2	100% Cohesive Failure	100% Cohesive Failure
EPDM SLABS - POWOW vide DHL AWB# 2118016611	10	SPECTREM [®] 2	100% Cohesive Failure	100% Cohesive Failure
EPDM SLABS - POWOW vide DHL AWB# 2118016611	NONE	PROGLAZE [®] II	100% Cohesive Failure	100% Cohesive Failure
EPDM SLABS - POWOW vide DHL AWB# 2118016611	10	PROGLAZE [®] II	100% Cohesive Failure	100% Cohesive Failure

100% COHESIVE FAILURE = PASS
 100% ADHESIVE FAILURE = DOES NOT PASS

An **RPM** Company

Tremco
 Tremco Incorporated
 3735 Green Road • Beachwood, Ohio 44122

R/D TEST NO.: 7098
 PROJECT REFERENCE: Index Tower
 SALES REP: Keith Shearman
 CUSTOMER: GTP Overseas Private Limited
 LOCATION: Middle East

TEST RESULTS

Compatibility Testing: ASTM C - 1087 (U.V. Exposure)

Testing Material (Trade Name)	Sealant Specimen Control	Staining	Mode Sealant Failure
EPDM SLABS - POWOW vide DHL AWB# 2118016611	SPECTREM [®] 2 - WHITE	0	100% Cohesive Failure
EPDM SLABS - POWOW vide DHL AWB# 2118016611	SPECTREM [®] 2 - BLACK	0	100% Cohesive Failure
EPDM SLABS - POWOW vide DHL AWB# 2118016611	PROGLAZE [®] II - BLACK	0	100% Cohesive Failure

WARRANTY:
 We warrant our products to be free of defects and manufactured to meet published physical properties when cured and tested according to applicable specifications and Tremco standards. Under this warranty, we will provide at no charge, production containers of the same product to be tested when applied in accordance with our written instructions and in applications recommended by us as suitable for the product.

All claims concerning product defects must be made within six (6) months from the date of such claims in writing, during this period, will constitute a waiver of all claims with respect to other warranties expressed or implied, including but not limited to, any implied warranty of MERCHANTABILITY OR FITNESS FOR A PARTICULAR PURPOSE.

The data and recommendations above are based on samples and information provided by Keith Shearman. These recommendations have been derived from Tremco Laboratory Testing of the samples provided. Tremco cannot be held responsible for material/sample differences, substitutions or variations in the finishing day-to-day variations in these processes, which may alter these recommendations. It is Tremco's best recommendation to field Adhesion Testing continuously throughout the project. Refer to Tremco Structural Glazing Project Control for adhesion procedures and cleaning preparation.

Signature: *Lisa Chavers*
 Date: May 1, 2007

An **RPM** Company

CERTIFICATE

DQS GmbH
 Deutsche Gesellschaft zur Zertifizierung von Managementsystemen

herby certifies that the company
Anand Nishikawa Company Limited
 119, Udyog Vihar, Phase-I
 Gurgaon, India

for the scope
 Design, manufacture and supply of EPDM weather strips and PVC trims for the automotive industry
 has implemented and maintains a
Quality Management System.

An audit, conducted in accordance with the "Rules for certification bodies to ISO/TS 16949:2002 Second Edition" and documented in a report, has verified that this quality management system fulfills the requirements of the following ISO Technical Specification:

ISO/TS 16949:2002
 Second Edition March 2002
 (with product design)

Certification audit: 2005-11-21 - 2005-11-23
 2005-12-10

Certification decision: 2006-02-02

This certificate is valid until: 2009-01-02

Certificate Registration No.: 310620 T52

IATF No.: 0016893

Issued in Frankfurt am Main, Germany 2006-02-02

Keith Shearman
 Keith Shearman
 Managing Director

H. H. H.
 Dipl.-Ing. S. Hentsch
 Managing Director

80433 Frankfurt am Main, August-Schanz-Strasse 21
 (Tel. +49-69-95 42 70), Germany

Certificates

25 Apr 2007
Page 1 of 2

DOW CORNING

Ajay Saxena
GTP OVERSEAS PRIVATE
C-10, Sector-1, NOIDA-201301, Saif Zone
Sharjah
INDIA

**Dow Corning Construction Industry System
Laboratory Report - Sealant Compatibility**

Date: 25 Apr 2007
Document ID: 0000033742
Job Number: 0000027852
Job Name: LOB Tower
Job Address: Dubai, UNITED ARAB EMIRATES
Customer: GTP OVERSEAS PRIVATE
Customer Fax: +91-120-4324736 asaxena.gtp@anbros.com

COMPATIBILITY TESTING (Modified ASTM C1087)

Dow Corning has completed compatibility testing / evaluation in support of the above referenced project. A summary of this laboratory testing / evaluation and application recommendations is given below.

Sample	Substrate Description
J.SAMPLE 4716	Other
Substrate Type	Compound Code: PO / WOW
Substrate Description	Sealant
	Application Recommendation
Dow Corning® 795 Silicone Building Sealant	Approved for Full Contact
Dow Corning® 813 Construction & Concrete Silicone Sealant	Approved for Full Contact
Dow Corning® 895 Structural Glazing Sealant	Approved for Full Contact
Dow Corning® 993 Structural Glazing Sealant	Approved for Full Contact

Based on the ASTM C-1087 test procedure, or for Europe test method ETAG 002 Paragraph 5.1.4.2.5, the Dow Corning silicone sealants tested adhered to the test material. ASTM C-1087 and ETAG 002 Paragraph 5.1.4.2.5 are qualitative adhesion test but a good indication for non-moving applications.

The results of the compatibility testing are only valid as long as the supplier certifies that neither the formulation nor manufacturing process for these materials has been changed.

For structural glazing application, the results of the compatibility testing are only valid when Dow Corning has approved glazing details, and has tested and approved all substrates and accessory materials that contact the structural silicone sealant.

For further information regarding these test results, please contact your Dow Corning Construction Field Specialist, Fiby

AMERICAS DOW CORNING CORPORATION Your Global Construction Connection @ www.dowcorning.com/connections	AMERICAS Sealant Test Lab, DC-4, Lab 3A4 2200 W. Salzborg Road Auburn, MI 48611 USA Tel: 989 496 5237 Fax: 989 496 4374 Americas.Cornis@dowcorning.com	ASIA Songjiang Plant Dow Corning (Shanghai) Company, Ltd. 448 Eastern Ave. Songjiang Industrial Zone Shanghai 201613, P. R. China Phone: 86 21 5774 1161 Fax: 86 21 5774 3471 Asia.Cornis@dowcorning.com	EUROPE Pare de Senefle Dow Corning S.A. Pare Industrie 7180 Senefle Belgium Phone: 32 64 888 000 Fax: 32 64 88 8950 Europe.Cornis@dowcorning.com
---	--	---	---

25 Apr 2007
Page 2 of 2

DOW CORNING

Albert, on +32 64888413 at Senefle, BELGIUM
E-mail: Fiby.albert@dowcorning.com

Sincerely
DOW CORNING CORPORATION

Fiby Albert
Construction Lab leader

cc: Serge Sibille, Dow Corning SA, Lyon Cedex 2 FRANCE

AMERICAS DOW CORNING CORPORATION Your Global Construction Connection @ www.dowcorning.com/connections	AMERICAS Sealant Test Lab, DC-4, Lab 3A4 2200 W. Salzborg Road Auburn, MI 48611 USA Tel: 989 496 5237 Fax: 989 496 4374 Americas.Cornis@dowcorning.com	ASIA Songjiang Plant Dow Corning (Shanghai) Company, Ltd. 448 Eastern Ave. Songjiang Industrial Zone Shanghai 201613, P. R. China Phone: 86 21 5774 1161 Fax: 86 21 5774 3471 Asia.Cornis@dowcorning.com	EUROPE Pare de Senefle Dow Corning S.A. Pare Industrie 7180 Senefle Belgium Phone: 32 64 888 000 Fax: 32 64 88 8950 Europe.Cornis@dowcorning.com
---	--	---	---

LOB04 / G29 & 31s
PO Box 17193
Jebel Ali Free Zone, UAE
Tel: +971-4-8818365
Fax: +9714-8818367

MOMENTIVE
performance materials

Results :

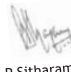
Test Slab

Sealant	Discoloration Sealant	Discoloration Gasket	Cure Sealant	Adhesion to glass
SSG 4000	None	None	ok	ok
SSG 4400	None	None	ok	ok
SCS 2000	None	None	ok	ok

Conclusion :

Ultraglaze SSG 4000, Ultraglaze SSG 4400 and SCS2000 are compatible with Test Slab and can be recommended for use in contact with them.

Kind regards,


P Sitharam

Momentive Performance Materials (Swiss) Srl • Jebel Ali Free Zone • PO Box 17193 • Dubai • UAE

LOB04 / G29 & 31s
PO Box 17193
Jebel Ali Free Zone, UAE
Tel: +971-4-8818365
Fax: +9714-8818367

MOMENTIVE
performance materials

To : GTP Overseas
From : Momentive performance Materials
Date : June 11, 2007
Re : Compatibility of Test slabs PO/WOW in contact with Ultraglaze SSG 4000, Ultraglaze SSG 4400 and SCS2000 Silpruf

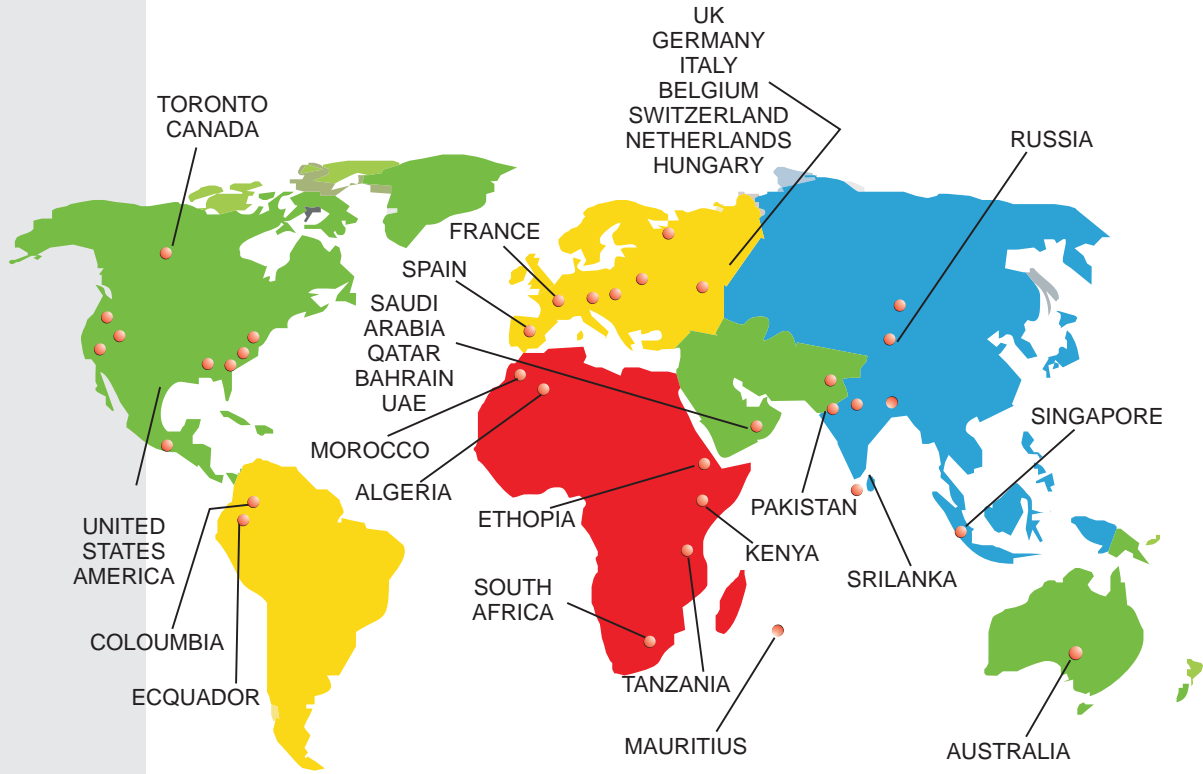
Test Method:
ASTM C1087
Time of Exposure - 21 days
Lamp - UVB 313

Objective:
To note the following when substrates exposed to UV lamp
-Discolouration
-Adhesion

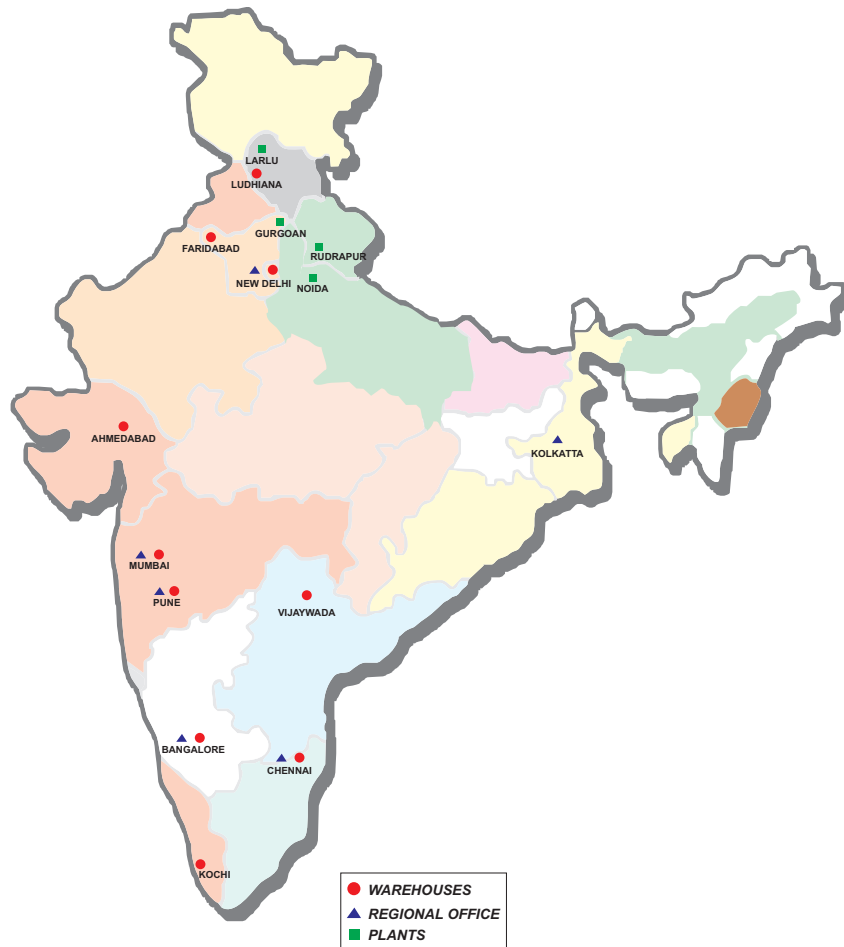
Testing Specimen:
Test slabs PO/WOW

Material Used in the Test:
Testing Specimen
Ultraglaze SSG 4000
Ultraglaze SSG 4400
White Sealant, SCS 2000
Accessories

Global Presence



Network in India



Partners in Progress

INTERNATIONAL



TREMCO

U.S.A.



ALICO:
ALUMINIUM & LIGHT
INDUSTRIES CO. LTD.



**ARABIAN
ALUMINIUM CO. L.L.C.**



multiforms L.L.C.
Architectural Aluminium & Façade Specialists.

MULTIFORMS L.L.C.



ARCAL
ARCHITECTURAL ALUMINIUM

ARCHITECTURAL ALUMINIUM



**ALUMINIUM TECHNOLOGY
AUXILIARY INDUSTRIES W.L.L.**



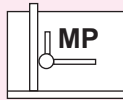
**THOMAS BENNETT
GULF(L.L.C.)**



DAMCO SYSTEMS
architectural aluminium



WHITE ALUMINIUM



METALL PLAN(UAE)



**STAR ELEVATOR SYSTEMS
& METAL TECHNOLOGY**



**ALUMCO
ARCHITECTURAL FACADE
SPECIALIST**

NATIONAL



HYDRO



SP FABRICATORS PVT. LTD.



ALUPRO
BUILDING SYSTEMS (P) LTD.



Fenesta
UPVC WINDOW AND DOOR SYSTEMS



**ELGI BUILDING
PRODUCTS**

**SARA ELGI.
ELGI BUILDING PRODUCTS LTD**



al karma



ALP Overseas Private Limited

Plot No. 32, Sector-18,
Gurgaon-122 015

Tel.: +91-124-4001020, 4002030

E-mail: marketing@alpoverseas.com, Web: www.alpoverseas.com